

Complete motion control versatility



STANDARD PACKAGE

- Cyclo-Index 4000 Series Dial Table.
- 1/3 hp motor, 90V DC, 1800 rpm.
- Double-enveloping worm reducer, internally mounted, 30:1 or 60:1 ratio.
- Motor controller with variable speed, dynamic braking.
- Cam and limit switch for cycle-on-demand.
- Center through-hole for power/signal apparatus.
- Universal mounting capability.

The Cyclo-Index 4000 Series Dial Table Index Drive Package delivers a low-profile rotary dial indexer with the flexibility of our Cyclo-Index cam-driven mechanism. This allows a variety of standard motions, including a true 2-stop model. We can also provide special motions to meet specific design requirements.

OPTIONS

- 1-stop through 12-stop available.
- Other motions and input periods.
- Non-standard ratios and motors.
- Torque overload device.
- Dial plates.

CAPACITIES AND KINEMATIC DATA: 4000 DT DRIVE

# Stops	Motion	Peak Kinematic Factors			Input Motion (degrees)				Output Motion (degrees)				Torque Capacity (lb-in) per Reducer Ratio	
		Vp	Ap	Qp	Acc	Cst Vel	Dec	Total	Acc	Cst Vel	Dec	Total	30:1	60:1
2	300-1/2	0.6923	1.24	0.41	62.91	171.71	62.91	171.71	30.56	118.88	30.56	180	847	1483
3	270-1/3	0.5185	0.88	0.21	70.28	131.96	70.28	272.52	25.79	68.42	25.79	120	1174	2054
4	270-1/4	0.3929	0.63	0.11	76.83	119.51	76.83	273.17	21.52	46.96	21.52	90	1604	2807
6	270-1/6	0.2750	0.42	0.05	84.26	97.00	84.26	265.52	16.66	26.68	16.66	60	2353	3025
8	150-5/8	0.4226	0.69	0.13	75.00	0.00	75.00	150.00	22.50	0.00	22.50	45	1487	2602

Consult factory for other motions

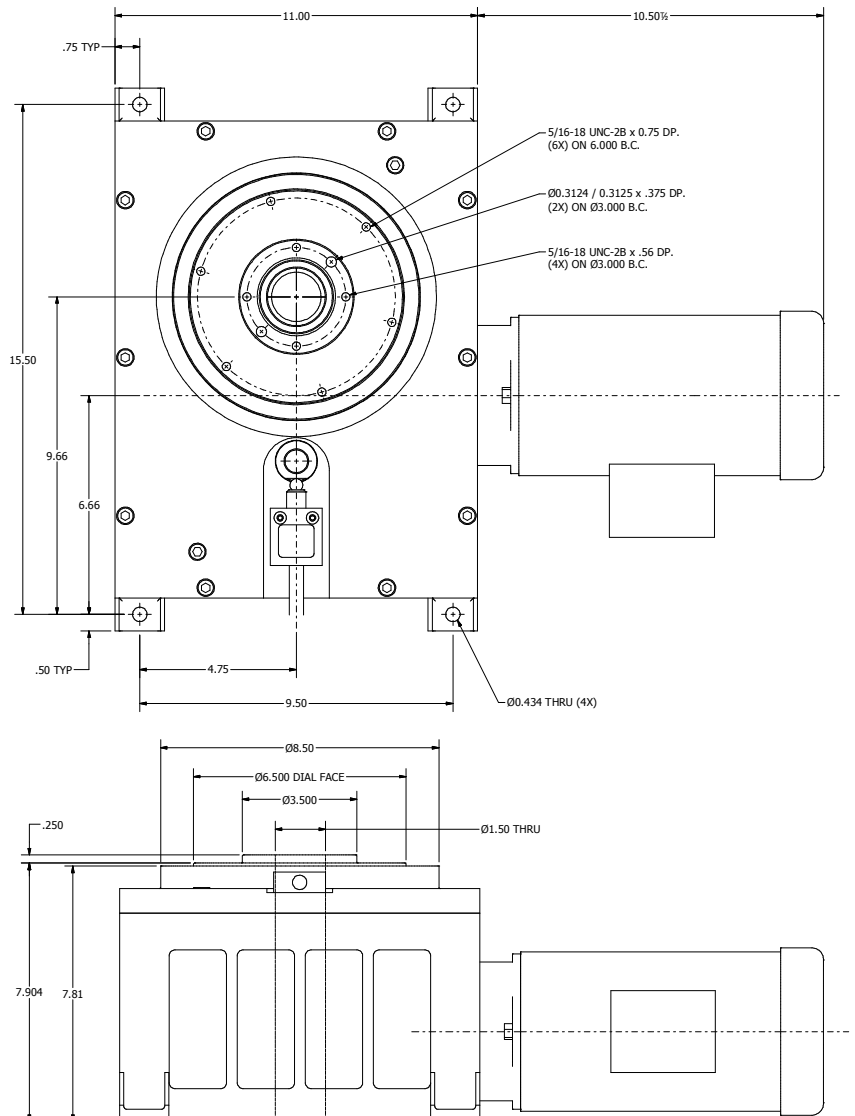
Ordering Information

Dial table drive designations are identified as follows:

4010DT - xxx-x/x - xx-x- 1/3

a
b
c
d

- a** – Model number
- b** – Motion
- c** – Reducer ratio
- d** – Motor mounting side



Motor mounting side 1 shown, side 3 is opposite.